

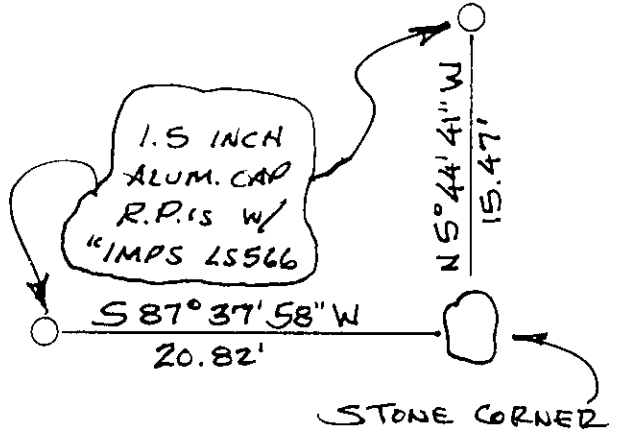
State of Wyoming Corner Record

(In compliance with the *CORNER PERPETUATION AND FILING ACT*, Wyoming Statutes, 1997 Section 33-29-140 et. seq., and the Rules and Regulations of the Board of Professional Engineers and Professional Land Surveyors)

Reverse side of this form may be used if more space is needed.

Record of original survey and citation of source of historical information (if corner is lost or obliterated). Description of corner monumentation evidence found and/or monument and accessories established to perpetuate the location of this corner. Sketch of relative location of monument, accessories, and reference points with course and distance to adjacent corner(s) (if determined in this survey). Method and rationale for re-establishment of lost or obliterated corner.

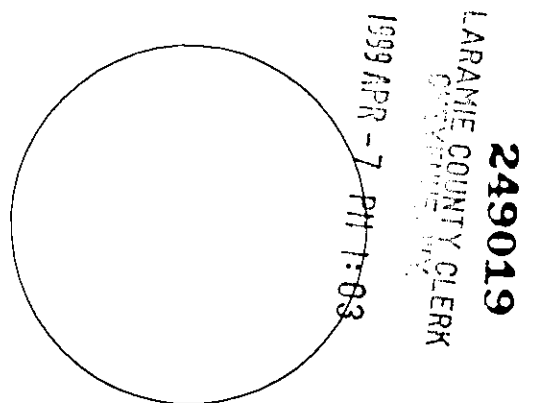
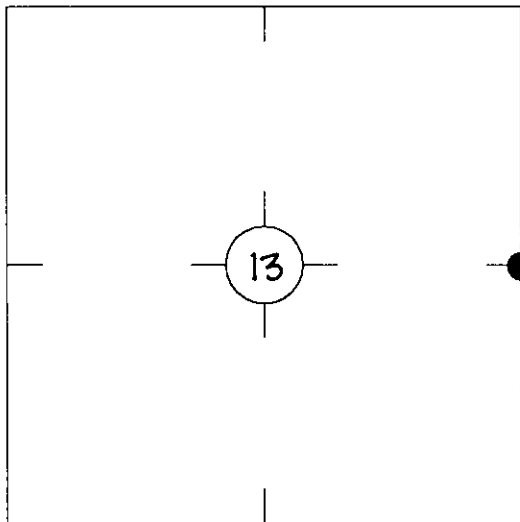
BLACK METAMORPHIC STONE
 SET FIRM AND MARKED "1/4"
 ON EAST FACE, WITH 1.5 INCH
 ALUM. CAP R.P.'S TO THE NORTH
 AND WEST. SET TPOST ALONG
 SIDE.



Project Coordinate: North 217045.65

Project Coordinate: East 717598.63

T13N R68W 6PM
 Monument location



Monument Inscription

Date of Field Work: AUG 15, 1998

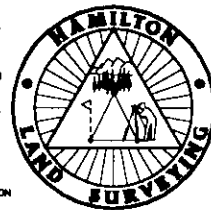
Office Reference: IME8418RS, PT. 1175

Cross Index Plat

	1	2	3	4	5	6	7	8	9	10	11	12	13	14	15	16	17	18	19	20	21	22	23	24	25
A																									
B																									
C		6	5	4	3	2	1																		
D																									
E																									
F																									
G			7	8	9	10	11	12																	
H																									
I																									
J																									
K																									
L			18	17	16	15	14	13																	
M																									
N																									
O																									
P			19	20	21	22	23	24																	
Q																									
R																									
S																									
T			30	29	28	27	26	25																	
U																									
V																									
W																									
X			31	32	33	34	35	36																	
Y																									
Z																									

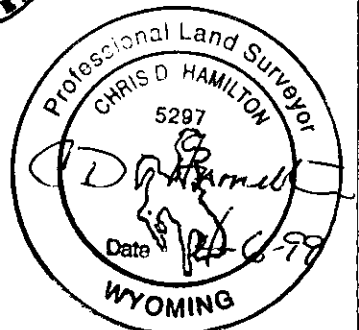
Firm/Agency, Address

this corner record provided by:
**HAMILTON
 LAND
 SURVEYING**
 102 West Ramshorn, Ste. 201
 Dubois, WY: 307-455-2070
A WYOMING COMPANY PROVIDING:
 COMMERCIAL - RESIDENTIAL - INDUSTRIAL
 OIL & GAS - WATER RIGHTS - CONSTRUCTION
 AND SUBDIVISION LAND SURVEYING SERVICES



This corner record was prepared
 by me or under my direction
 and supervision.

SEAL & SIGNATURE



County: LARAMIE, Wyoming

Corner Name: EAST ONE QUARTER, Section: 13, T 13N, R 68W, 6TH P.M., Cross-Index No.: L-25

SBRPEPLS/PLSW: March 1994; PLSW January 1998